

WEST STRATEGIC NEIGHBOURHOOD FORUM

Day: Thursday
Date: 21 March 2019
Time: 6.30 pm
Place: The Lounge, Ryecroft Hall, Audenshaw

| Item No. | AGENDA | Page No |
|----------|---|---------|
| 1. | APOLOGIES FOR ABSENCE | |
| 2. | MINUTES To consider the minutes of the meeting of the West Strategic Neighbourhood Forum meeting held on 17 January 2019. | 1 - 2 |
| 3. | ITEMS FOR CONSULTATION | |
| a) | AGEING WELL To receive a presentation from the Director of Adult Services. | 3 - 16 |
| b) | EMPLOYMENT INITIATIVES The Director of Growth to present the attached slides consulting Members on the coordinated Employment Initiatives within the Neighbourhood. | 17 - 34 |
| c) | FOOD STRATEGY The Director of Population Health to present the attached slides consulting on the Food Strategy. | 35 - 54 |

This page is intentionally left blank

WEST STRATEGIC NEIGHBOURHOOD FORUM

17 January 2019

Commenced: 6.30pm

Terminated: 7.50pm

Present: Councillors: Cooney, Fowler, Gwynne, A Holland (Vice-Chair), D Lane, Mills, Newton, Reid, Ricci, M Smith, T Smith, Ward (Chair) and Warrington

Apologies for Absence: Councillors: Bailey, Boyle, B Holland, Quinn and Ryan

8 MINUTES

RESOLVED

That the minutes of the meeting of the West Strategic Neighbourhood Forum held on 18 October 2018 be approved as a correct record.

9 LIVING LIFE WELL PROGRAMME: IMPROVING MENTAL HEALTH SUPPORT IN NEIGHBOURHOODS

The Forum received a presentation from the Interim Director of Commissioning, consulting Members on the development of the Living Well Programme that aimed to create new approaches to mental health support across Tameside & Glossop. The Living Well model sought to change the way the voluntary and public sectors work together to ensure the right support is available to people when it was needed. The programme had been awarded £3.4 million in National Lottery funding over three years to support new local partnerships in Edinburgh, Luton, Salford and Tameside & Glossop to develop their own versions of an approach which had been established successfully in Lambeth.

The aim was to transform mental health support towards early intervention and prevention, supporting people to live at home and ensuring delivery of high quality and sustainable services. Creation of a Living Well system would support residents to get and keep well by strengthening personal sense of meaning, close interpersonal relationships, and social integration. Involvement in the programme was to be led by key local organisations including: Action Together, the Clinical Commissioning Group, the Local Authority, and Pennine Care NHS Foundation Trust. Service users would have access to each of the local partner organisations working within one Hub to make sure that everyone was receiving the best service for their needs.

In response to Members comments in respect of response times to referrals for people suffering with mental illness, the Interim Director of Commissioning advised that the new approach was likely to provide a comparatively low cost and high volume way of freeing up resources in local secondary care services thereby reducing waiting times.

In response to Members questions, the Interim Director of Commissioning advised that approaches to supporting Children's mental health were being developed and would be subject to further consultation.

RESOLVED

That the presentation be noted.

10 COMMUNITY SAFETY

The Assistant Director – Operations and Neighbourhoods, delivered a presentation outlining the three key priorities of the Standing Together – Greater Manchester Police and Crime Plan, as follows:

- Keeping People Safe
- Reducing Harm and Reoffending
- Strengthening Communities and Places

The Assistant Director further set out the Tameside Draft Policies as follows:

- Reducing violent crime & domestic abuse
- Preventing & dealing with crime & anti-social behaviour
- Reducing harm caused by drugs & alcohol
- Preventing the exploitation of children & vulnerable people
- Improving community confidence & cohesion

Progress on all the above priorities was outlined and information given in respect of the formation of a draft strategy. Suggestions were welcomed and should be forwarded to John Gregory, the Head of Homelessness and Community Safety.

Detailed discussion ensued with regard to the content of the presentation and Members commented on the scale of the work to be done and focused, in particular, on licensing laws and the availability of alcohol, the importance of community policing, reducing domestic violence and the equalities agenda. The significance and impact of 'low level' crime such as dog fouling, littering, fly tipping etc., was also highlighted.

RESOLVED

That the content of the presentation be noted.

11 BUDGET CONVERSATION 2019-20

It was reported that Tameside Council (TMBC) and NHS Tameside and Glossop clinical Commissioning Group (T&GCCG) had come together to form the Tameside and Glossop Strategic commission. Together they handled over £900 million of money spent on public services ranging from bin collections through care for the elderly to the provision of GP surgeries. Both TMBC and T&GCCG had to set a balanced budget for 2019/2020. The view of stakeholders, partners and residents were important in helping to understand local priorities and inform the budget setting process. Further information on the budget and the Budget conversation 2019-2020 was available on the Tameside council website at:

<https://www.tameside.gov.uk/tbc/budgetconversation2019-20>.

The same page also included a link to an online survey which gave people the opportunity to have their say on priorities for the budget in 2019-20 and future years. The closing date for completing the Budget Conversation 2019-20 survey was 29 January 2019.

RESOLVED

That the information provided be noted.

Age Friendly Tameside: Working Together in Partnership

Page 3

Agenda Item 3a

Where Does It Start



Creating environments where older people are respected, recognised and included in the community and the family.

Where we live

Outdoor spaces and
buildings

Appropriate and affordable
housing

Accessible and affordable
transportation



Where we live



Take a Seat Campaign

Page 6



Where we live

Page 7



Where we live

The Together Centre @ Loxley House

“We want to be a place of possibility. We want to be a place where people can come together, feel safe, well and happy. Where people can learn and grow and feel a sense of pride and ownership.....”

Page 8

The Shed, Men in kitchens:

https://youtu.be/zAxTOz5I_PQ

What we do

Social Participation

Civic Participation and
Employment

Communication and
Information



What we do

Page 10



LIFE IN TAMESIDE & GLOSSOP

JSNA web portal

www.lifeintamesideandglossop.org

Find Support

Page 12

Search area or neighbourhood. If you are not sure what ward you live in then you can put your post code in the map on the home page and it will show you which ward you live in or interested in.

Home » Services

Tameside and Glossop Support Directory

To find your nearest point of support, please use the filters below:

1 Please select your area

Ashton

2 Please select your service

Medical

SHOW RESULT

0 Services are available for you:
Sorry, we could not find any services at this time.

Here you just look for the services or groups you are interested in. Once you have chosen if there is something in you area a list will appear here.

Tameside and Glossop Support Directory

SHOW RESULT



4 Services are available for you:

- 1 **Tameside Women and their Families Centre**
41-46 Cavendish Mill,
Bank Street,
Ashton -Under -Lyne,
OL6 7DN
- 2 **Tameside Citizens Advice Bureau**
Clarence Arcade
Stamford St
Ashton-under-Lyne
OL6 7PT

Next Steps

- Service and Support information has been collected from different groups. The drop down box in the find support page will include a community groups-this will link direct to the Action Together Community directory.
- Each community asset has a page with brief information about what they do and how to contact them.
- The intention is that the 'Support' area of the website will be owned and managed by people working across the system in social prescribing roles.

How we get support

Page 15



Affordable, good quality and appropriate Community Support and Health Services

Summary

Page 16



West Neighbourhood Strategic Forum

Page 17

Employment Initiatives

David Berry Head of Employment and Skills

Agenda Item 3b

Tameside Residents

- 140,000 of 224,100 (62%) residents are aged 16-64 (working aged) v 63% in UK
- 105,200 (72.6%) residents are currently in employment v UK 75%
- 11,500 (8.2%) residents receive Employment Support Allowance benefit due to health condition...
 - 50% have main condition of mental or behavioural disorders, 14% musculoskeletal
- 13,300 (18%) workless households v UK 14.5%
 - The percentage of children who are in households that are workless is 19% v UK 10.7%
- 15,100 (10.9%) retain no qualifications v GB 7%
 - 95,600 (69.1%) retain a Level 2 qualification v GB 74.7%
 - 36,200 (26.2%) retain a Level 4 qualification and above v GB 38%
 - 1,420 (1.0%) disabled people are claiming benefits v GB 0.8%

Page 18

Careers advice commissioned by Tameside Council

- Targeted at young people aged 13 to 18 (in some cases 25) to help them move into education, employment and training
- As of January 2019, we have **143 NEET** young people
- Participation is at 95.1% which is above target and an improvement in performance from last year.

Page

38 (26%) come from Tameside West

- **22 (15%) come from Denton**
- **10 (7%) come from Droylsden**
- **6 (4%) come from Audenshaw**

Careers and Apprenticeship Exhibition

- Location of events in recent years: Stalybridge Civic and Hyde Town Hall
- **1,121** students attended in 2018
- Feedback rate of above 90% of pupils who 'found the event useful'
- **17 schools took part in the Exhibition**
- **4 (23%) schools from Tameside West took part (Audenshaw School, Denton Community College, Droylsden Academy, Fairfield High School for Girls)**

Page 20

Tameside HACK



Delivered six HACKs to raise aspirations in young people from the borough, creating a digital skills pathway for future industry

- HACKs 1, 2, 3 and 6 were delivered in Ashton, HACK5 was delivered in Guide Bridge and HACK4 was delivered in Hattersley, only to local residents identified by the youth offending team as the most hard to reach children in Tameside.

Page 2 of 2

10% (25) came from Tameside West

- **1 (4%) HACK attendee came from Audenshaw**
- **7 (28%) HACK attendees came from Denton**
- **17 (68%) HACK attendees came from Droylsden**

Tameside Employment Fund

- Local schemes and grants to create youth employment
 - Youth Employment Scheme (£6,000), Trade Grant (£750), Business Grant (£1,500)
 - From May 2015, 368 young people supported (inc 273 apprentices)
 - Tameside Council has **committed a further £287k** over the next 2 years (2019-2020) to **Tameside Employment Fund (TEF)**.
 - **TEF** will deliver **£387k** of support including GM funding

Page 22



Tameside Business/Trade Grants and YES

- Tameside Business Grant - 93% (133) sustained employment. **This scheme has benefitted 21% (31) of residents and 20% (30) businesses in Tameside West.**
- Trade Grant - 94% (101) sustained apprenticeship/employment. **This scheme has benefitted 32% (35) recipients and 26% (29) businesses from Tameside West.**
- Youth Employment Scheme - 116 Job Starts for our young residents. 56% completion rate. **This scheme has benefitted 15% (18) young people and 32% (38) businesses from Tameside West.**

Page 23

Adult skills

Major changes to adult skills in Greater Manchester

- £92m in funding devolved to GM from 2019/20
- Greater Manchester Combined Authority will now commission the providers who will deliver in Tameside
- Responsive, flexible with learners at heart
- 3 'Ofsted good' adult colleges including Adult Community Education

Page 24

Adult Community Education (ACE) Delivery

ACE located in Ashton delivering courses to lower level learners upto GCSEs

- English
- Maths
- ICT
- Community based courses

ACE deliver in Ashton and Hyde:

- Holy Trinity (AUL)
- St. Peter's Children's Centre (AUL)
- Wellbeing College (AUL)
- St. Georges Primary (HYDE)
- Greenfield School (HYDE)



61 enrolments per year - 15% of ACE learners come from Tameside West

Inspiring Digital Enterprise Award (iDEA)

- Like the Duke of Edinburgh's Award, iDEA is a recognised qualification that can enhance CVs
- Learn essential life skills through iDEA: keeping safe online managing money; keeping data safe; and making digital media

We have worked with schools, colleges, businesses and stakeholders to establish iDEA across the borough.

- Launched iDEA with introductory workshop at CoderDojo, Active Ashton
- Delivered iDEA workshops in partnership with Ashton Job Centre, Tameside and Glossop Integrated Care NHS Foundation Trust, Hyde Community College, Clarendon Sixth Form and TMBC Workforce Development



Working Well

Greater Manchester Working Well

- Started in 2014 as £6m pilot, now a £54m programme
- 2,500 residents supported so far 300 starting work
- One to one support, 18 months, person centred
- Innovative work with GP Practices to engage residents

There were 317 referrals to Working Well from Tameside Jobcentre Plus in 2018; 183 (58%) from Ashton and 134 (42%) from Hyde

Page 27

- Supported employment service within TMBC
 - Learning Disability
 - Autism
 - Acquired Brain Injury
 - Mental Health
- Deliver services in locations across the borough (not in homes)
- Routes to Work have excellent working relationships with a number of large employers in Ashton
 - For example, Symmons (IKEA) have been instrumental in working in partnership with the service to provide employment skills in a real work environment
 - We would like to build our network of employers

Page 28

Routes to Work employability programme

1. **Work out for Work by Tameside ACE** - 8 people attended that have significant barriers to employment because of a disability, or a health condition.
2. **Autism/Learning disability in partnership with People First** - employability programme for 6 people with autism or learning disability. There is a vacancy at the end of the course, that participants can apply for, this course addresses other social issues that are/or can be attributed to work.

Page 29

Routes to Work are supporting 39 (30%) people from Tameside West

- **10 (25%) have moved in to paid employment**
- **9 (23%) are currently volunteering**

Pre-Employment Programmes #1

Introduction to T&GICFT, Assessment, Application and Interview Day

- Location of event: Ashton Market Hall
- Attendees provided by all Jobcentres, Routes to Work, Working Well, i2i and Positive Steps to ensure engagement across the borough.

Page 30
32 residents attended seeking Health Care and Domestic roles

- **8 (25%) people securing employment in this field**
- **8 (25%) in Administrative posts.**
- **16 residents were employed in apprenticeship roles giving a success rate of 50%.**

Pre-Employment Programme #2

- Robertson pre-employment pathway
- Location of events: Dukinfield and Ashton-under-Lyne
- This supported take up of roles with the Council's contracted building management company for Facilities Management.
- Catering, care taking and cleaning roles within our schools and office buildings were available.
- **28% of residents who gained employment were from Tameside West**

Page 31



Jobs Fairs

- Location of events: Hattersley, 2017 – **350 attendees**, Ashton-under-Lyne, Jigsaw 2018 – **750 attendees**
- Borough wide offer - It's open to everyone and there is no need to book
- As well as job vacancies, the event offers the chance to speak to employers to discuss career prospects, and information about training, skills and adult learning is also be available.
- Firms who have participated: **Able Care & Support Services Ltd, BSS LED, G4S Security, Greater Manchester Police, Ikea, National Health Service, North West Ambulance Service, O2, People Plus**, as well as many more.

Page 32

Age Friendly Work

- There are many offers of support available in Tameside to enable people to remain in the workplace or take up volunteering as they age:
- **The Working Well programme** assists Work-related Activity Group (ESA) and Universal Credit claimants to **progress towards, get into, and stay in work.**
- **Adult and Community Education** services aim to increase the level of skills and employment locally, with the Digital Skills Programme, including **iDEA**, focussing specifically on **developing the digital skills approach and network in Tameside.**
- Support available to **help people to start up businesses** and take up volunteering opportunities, in addition to **Routes to Work.**
- Further help is provided by **Action Together's Volunteer Centre** in Ashton, which helps Tameside organisations find volunteers.

Questions?

Page 34

Contact details:

david.berry@tameside.gov.uk

Head of Employment and Skills

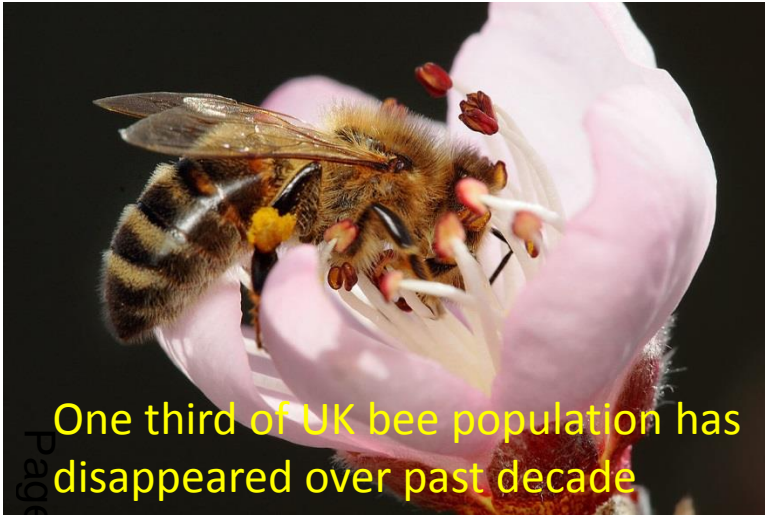
07854163188

A healthy and sustainable food strategy for Tameside

Liz Harris

Programme Manager, Population Health
Chair, Tameside Food Strategy Group

What is the connection between these things?



Diet related disease the biggest risk factor for ill health in the UK

What is the connection between these things?



One third of UK bees
disappeared over



ing
sea ice

The FOOD we eat



Over a million seabirds every
year killed by plastic pollution

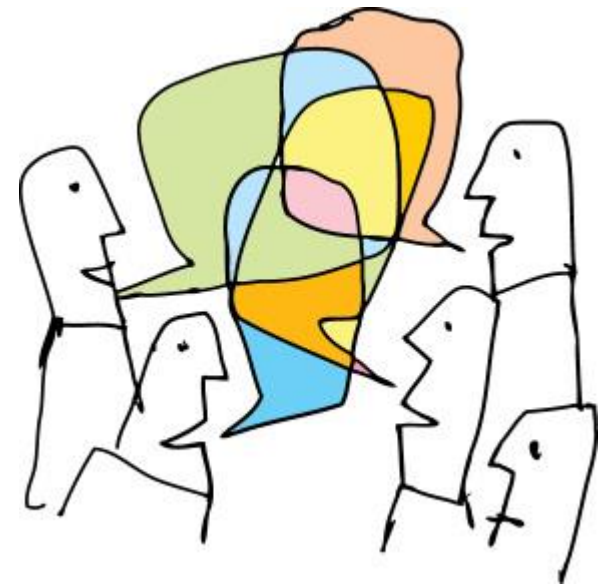


Diet related disease the biggest risk
factor for ill health in the UK



Why food and why now?

- We are not succeeding in reducing obesity or diet related disease
- Why have we got the food culture and system we have?
- Does it work for our health, communities, economy and planet?
- Is it doing more harm than good?
- What do we want to do about it?
- We are starting a bigger and broader conversation about food



A balanced diet is essential for health and wellbeing





Out of home food offer

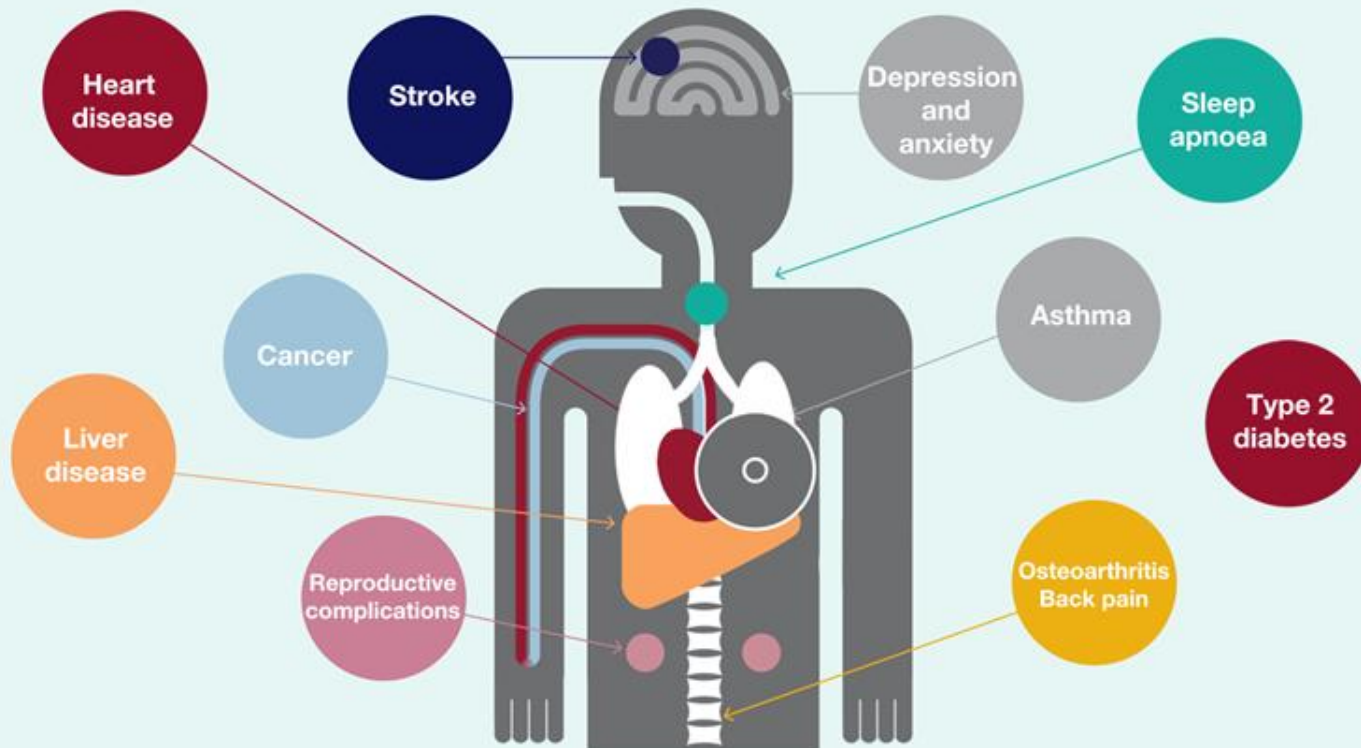


Where is the takeaway capital of the UK? Fast food towns 'dominated' by burgers and kebabs revealed



Is it all about obesity?

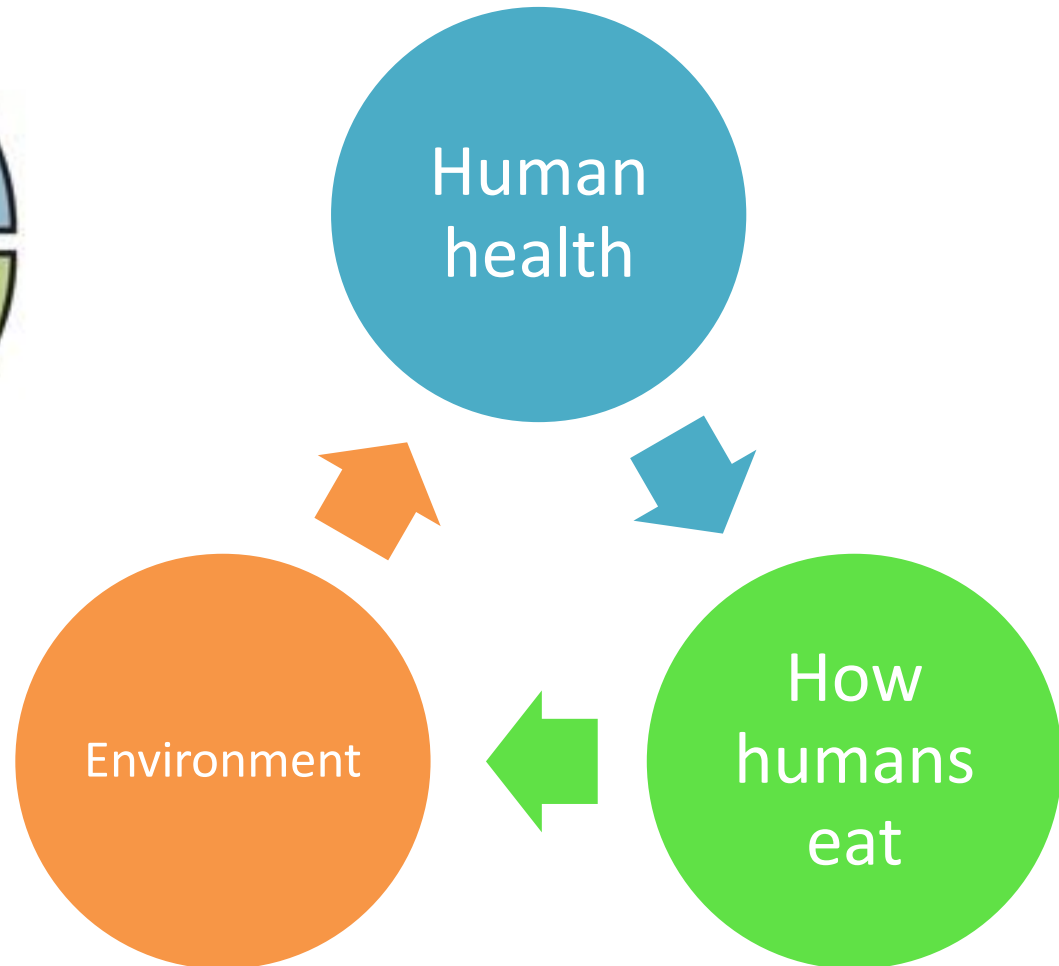
Obesity harms health



Ecological public health



Page 43



Carbon reduction

- **Food's carbon** footprint, or foodprint, is the greenhouse gas **emissions** produced by growing, rearing, farming, processing, transporting, storing, cooking and disposing of the **food** you eat. ...
- Changing the **foods** that you eat can have a big impact on your **carbon** footprint.



Food and greenhouse gas

How much impact does food have?

Proportion of total greenhouse gas emissions from food

A quarter of global emissions come from **food**

Food
26%

Other greenhouse
gas emissions 74%

More than half of food emissions come from **animal products**

Animal products
58%

Other food
42%

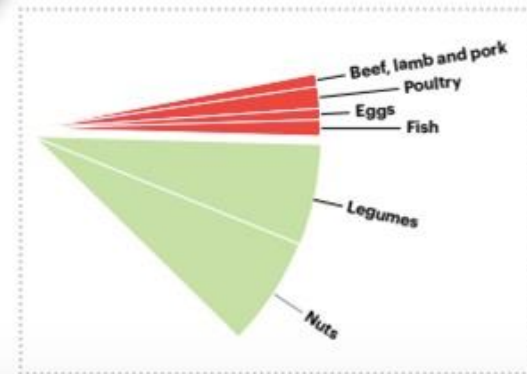
Half of all farmed animal emissions come from **beef and lamb**

Beef & lamb
50%



Other animal
products 50%

The Planetary Health Plate



Food can fix it

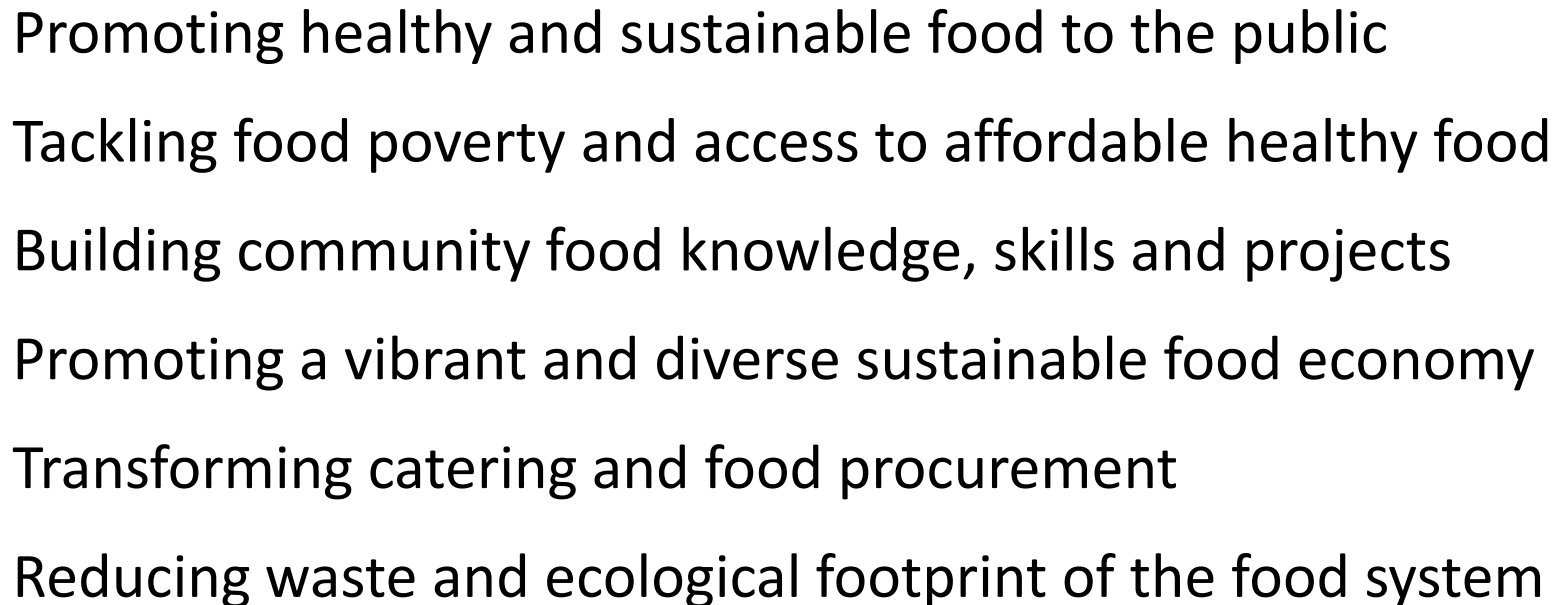
- Youtube 50.54 to 53.06
- <https://www.youtube.com/watch?v=6ZU9kQpXLjA>

Page 47



**SO,
WHAT'S
THE
PLAN?**

Page 49



Opportunities in Tameside

BEYOND THE
FOOD BANK.



Page 50

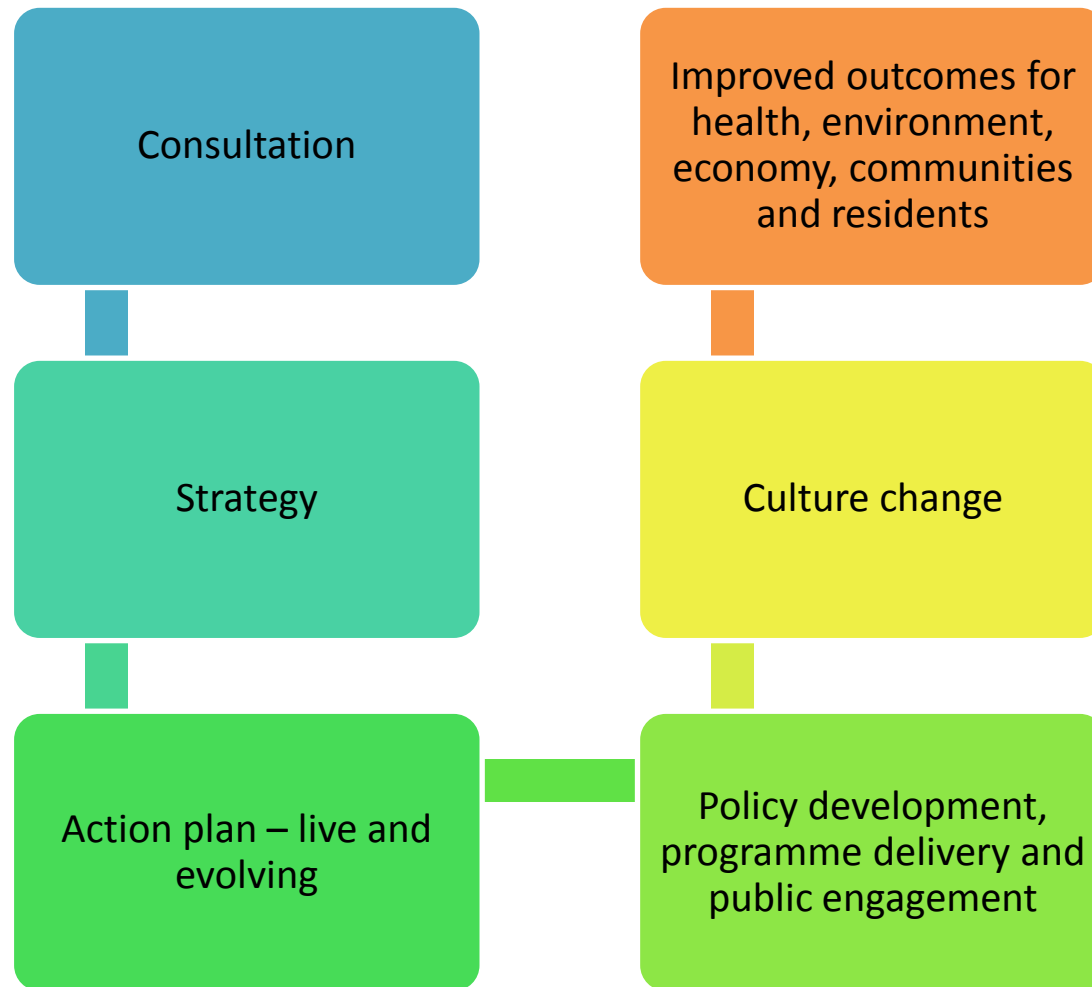


THE SHED

Men in Kitchens



Next steps



On-line survey

<https://www.tameside.gov.uk/foodsurvey>

- For all Tameside residents 16 years and over
- Smart phone compatible
- About 10 minutes
- Please mention to friends and family
- We want to know what Tameside thinks and begin a conversation about better food



Thank you

Please complete our survey

<https://www.tameside.gov.uk/foodsurvey>

This page is intentionally left blank